

# Leukemia

## Average Incidence<sup>†</sup> (New Cases) and Cancer-Related Mortality<sup>†</sup> (Deaths) per Year Male New Mexico Residents, 2008-2012

<i>Incidence</i>				
<b>Race/Ethnicity</b>	<b>Age-adjusted rate</b>	<b>Average number of new cases</b>	<b>Percent of all new cases</b>	<b>Rank among all new cancer cases<sup>‡</sup></b>
NM, Non-Hispanic White	18.3	101	3.6%	7
NM, Hispanic	10.5	38	2.9%	11
NM, American Indian	7.5	7	3.5%	10
NM, Black	10.0	2	3.1%	7
NM, All Races Combined	*	159	3.6%	*
US, All Races Combined <sup>§</sup>	17.0	24,690	3.1%	8
<i>Mortality</i>				
<b>Race/Ethnicity</b>	<b>Age-adjusted rate</b>	<b>Average number of cancer deaths</b>	<b>Percent of all cancer deaths</b>	<b>Rank among all cancer deaths<sup>‡</sup></b>
NM, Non-Hispanic White	8.6	49	4.5%	5
NM, Hispanic	7.0	23	4.1%	8
NM, American Indian	3.5	3	3.1%	10
NM, Black	-	-	-	-
NM, All Races Combined	*	76	4.3%	*
US, All Races Combined <sup>§</sup>	8.9	12,660	4.2%	6

<sup>†</sup> Rates are per 100,000 and age-adjusted to the 2000 US standard population.

<sup>‡</sup> Rank was determined by sorting the rate.

\* Please refer to the race-specific age-adjusted rates and ranks.

- Statistic and/or rank cannot be calculated or displayed due to a small number of cases.

<sup>§</sup> US incidence rates obtained from Surveillance, Epidemiology and End Results (18 Registries); US mortality rates obtained from National Center for Health Statistics (18 SEER Registries); number and percent of new US cases and cancer-related deaths obtained from American Cancer Society. *Cancer Facts and Figures 2010*. Atlanta: American Cancer Society; 2010.



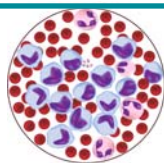
New Mexico Tumor Registry

Please contact us!

Phone: 505-272-5541

E-Mail: [info@nmtr.unm.edu](mailto:info@nmtr.unm.edu)

URL: [nmtrweb.unm.edu](http://nmtrweb.unm.edu)



# Leukemia

## Average Incidence<sup>†</sup> (New Cases) and Cancer-Related Mortality<sup>†</sup> (Deaths) per Year Female New Mexico Residents, 2008-2012

<i>Incidence</i>				
<b>Race/Ethnicity</b>	<b>Age-adjusted rate</b>	<b>Average number of new cases</b>	<b>Percent of all new cases</b>	<b>Rank among all new cancer cases<sup>†</sup></b>
NM, Non-Hispanic White	11.4	70	2.6%	9
NM, Hispanic	7.4	30	2.4%	11
NM, American Indian	5.5	6	2.7%	14
NM, Black	4.6	1	1.8%	15
NM, All Races Combined	*	116	2.7%	*
US, All Races Combined <sup>§</sup>	10.4	18,360	2.5%	11
<i>Mortality</i>				
<b>Race/Ethnicity</b>	<b>Age-adjusted rate</b>	<b>Average number of cancer deaths</b>	<b>Percent of all cancer deaths</b>	<b>Rank among all cancer deaths<sup>†</sup></b>
NM, Non-Hispanic White	5.1	37	3.8%	6
NM, Hispanic	4.3	17	3.6%	7
NM, American Indian	2.5	3	3.1%	13
NM, Black	-	-	-	-
NM, All Races Combined	*	58	3.7%	*
US, All Races Combined <sup>§</sup>	5.0	9,180	3.4%	6

<sup>†</sup> Rates are per 100,000 and age-adjusted to the 2000 US standard population.

<sup>‡</sup> Rank was determined by sorting the rate.

\* Please refer to the race-specific age-adjusted rates and ranks.

- Statistic and/or rank cannot be calculated or displayed due to a small number of cases.

<sup>§</sup> US incidence rates obtained from Surveillance, Epidemiology and End Results (18 Registries); US mortality rates obtained from National Center for Health Statistics (18 SEER Registries); number and percent of new US cases and cancer-related deaths obtained from American Cancer Society. *Cancer Facts and Figures 2010*. Atlanta: American Cancer Society; 2010.



New Mexico Tumor Registry

Please contact us!

Phone: 505-272-5541

E-Mail: [info@nmtr.unm.edu](mailto:info@nmtr.unm.edu)

URL: [nmtrweb.unm.edu](http://nmtrweb.unm.edu)