

# Melanoma of the Skin

## Average Incidence<sup>†</sup> (New Cases) and Cancer-Related Mortality<sup>†</sup> (Deaths) per Year Male New Mexico Residents, 2010-2014

<i>Incidence</i>				
<b>Race/Ethnicity</b>	<b>Age-adjusted rate</b>	<b>Average number of new cases</b>	<b>Percent of all new cases</b>	<b>Rank among all new cancer cases<sup>‡</sup></b>
NM, Non-Hispanic White	33.1	199	7.4%	4
NM, Hispanic	4.5	17	1.2%	17
NM, American Indian	3.4	2	1.1%	17
NM, Black	0.0	<1	0.0%	-
NM, All Races Combined	*	225	5.1%	*
US, All Races Combined <sup>§</sup>	27.7	44,250	5.2%	5
<i>Mortality</i>				
<b>Race/Ethnicity</b>	<b>Age-adjusted rate</b>	<b>Average number of cancer deaths</b>	<b>Percent of all cancer deaths</b>	<b>Rank among all cancer deaths<sup>‡</sup></b>
NM, Non-Hispanic White	5.4	33	3.0%	10
NM, Hispanic	1.3	4	0.7%	18
NM, American Indian	-	-	-	-
NM, Black	-	-	-	-
NM, All Races Combined	*	38	2.1%	*
US, All Races Combined <sup>§</sup>	3.8	6,060	2.0%	14

<sup>†</sup> Rates are per 100,000 and age-adjusted to the 2000 US standard population.

<sup>‡</sup> Rank was determined by sorting the rate.

\* Please refer to the race-specific age-adjusted rates and ranks.

- Statistic and/or rank cannot be calculated or displayed due to a small number of cases.

<sup>§</sup> US incidence rates obtained from Surveillance, Epidemiology and End Results (18 Registries); US mortality rates obtained from National Center for Health Statistics (18 SEER Registries); number and percent of new US cases and cancer-related deaths obtained from American Cancer Society. *Cancer Facts and Figures 2012*. Atlanta: American Cancer Society; 2012.



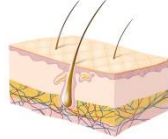
New Mexico Tumor Registry

Please contact us!

Phone: 505-272-5541

E-Mail: [nmtr-info@salud.unm.edu](mailto:nmtr-info@salud.unm.edu)

URL: [nmtrweb.unm.edu](http://nmtrweb.unm.edu)



# Melanoma of the Skin

## Average Incidence<sup>†</sup> (New Cases) and Cancer-Related Mortality<sup>†</sup> (Deaths) per Year Female New Mexico Residents, 2010-2014

<i>Incidence</i>				
<b>Race/Ethnicity</b>	<b>Age-adjusted rate</b>	<b>Average number of new cases</b>	<b>Percent of all new cases</b>	<b>Rank among all new cancer cases<sup>‡</sup></b>
NM, Non-Hispanic White	19.6	116	4.6%	6
NM, Hispanic	4.3	18	1.2%	15
NM, American Indian	3.1	3	1.1%	16
NM, Black	1.0	<1	0.3%	25
NM, All Races Combined	*	143	3.3%	*
US, All Races Combined <sup>§</sup>	16.9	32,000	4.0%	6
<i>Mortality</i>				
<b>Race/Ethnicity</b>	<b>Age-adjusted rate</b>	<b>Average number of cancer deaths</b>	<b>Percent of all cancer deaths</b>	<b>Rank among all cancer deaths<sup>‡</sup></b>
NM, Non-Hispanic White	2.4	16	1.7%	11
NM, Hispanic	0.7	3	0.6%	21
NM, American Indian	-	-	-	-
NM, Black	-	-	-	-
NM, All Races Combined	*	20	1.3%	*
US, All Races Combined <sup>§</sup>	1.6	3,120	1.1%	16

<sup>†</sup> Rates are per 100,000 and age-adjusted to the 2000 US standard population.

<sup>‡</sup> Rank was determined by sorting the rate.

\* Please refer to the race-specific age-adjusted rates and ranks.

- Statistic and/or rank cannot be calculated or displayed due to a small number of cases.

<sup>§</sup> US incidence rates obtained from Surveillance, Epidemiology and End Results (18 Registries); US mortality rates obtained from National Center for Health Statistics (18 SEER Registries); number and percent of new US cases and cancer-related deaths obtained from American Cancer Society. *Cancer Facts and Figures 2012*. Atlanta: American Cancer Society; 2012.



New Mexico Tumor Registry

Please contact us!

Phone: 505-272-5541

E-Mail: [nmtr-info@salud.unm.edu](mailto:nmtr-info@salud.unm.edu)

URL: [nmtrweb.unm.edu](http://nmtrweb.unm.edu)